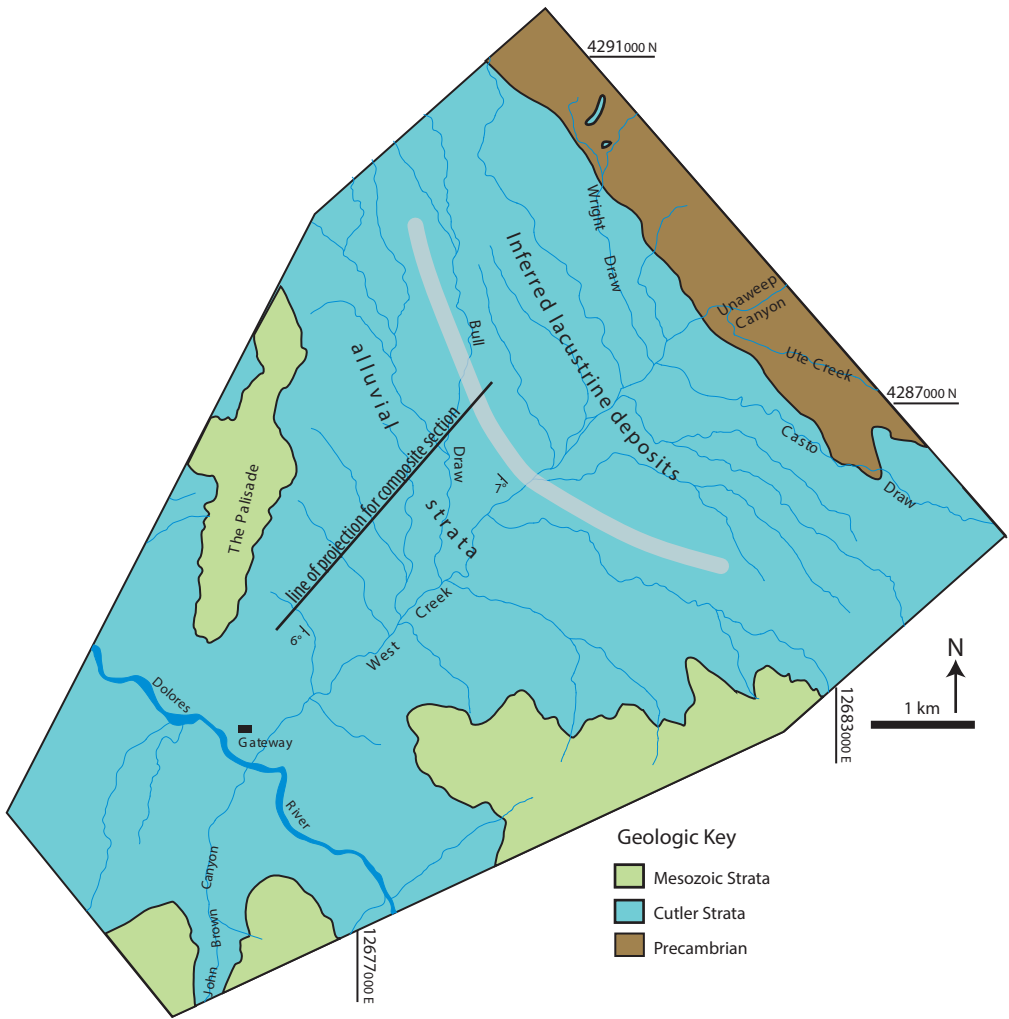
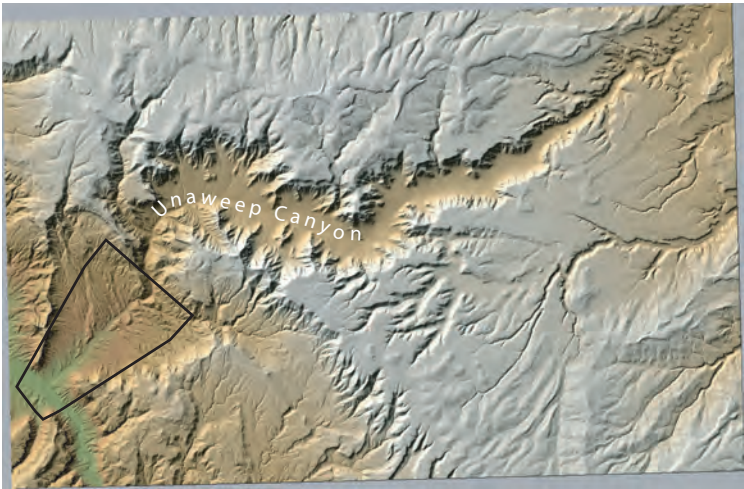
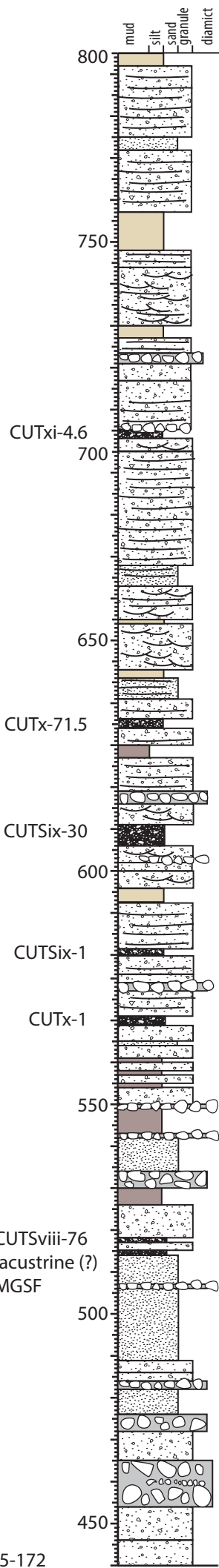


Geology and composite measured section of a portion of the proximal undifferentiated Cutler Formation exposed at the Gateway, Colorado study site. Composite stratigraphic section was compiled from stratigraphic sections VIII, IX, X, and XI of Soreghan et al. (2009) by projecting along strike onto the composite line.



Geologic Key

- Mesozoic Strata
- Cutler Strata
- Precambrian



alluvial strata

Inferred distal lacustrine deposits

Lithology

- Diamict
- Granule
- Sand
- Silt
- Mud
- MGSF

Transition from Facies Association 3 to 4&5 of Soreghan et al. (2009)

CUTvi.5-172 lacustrine (?)  
MGSF is below composite section