

Figure S1

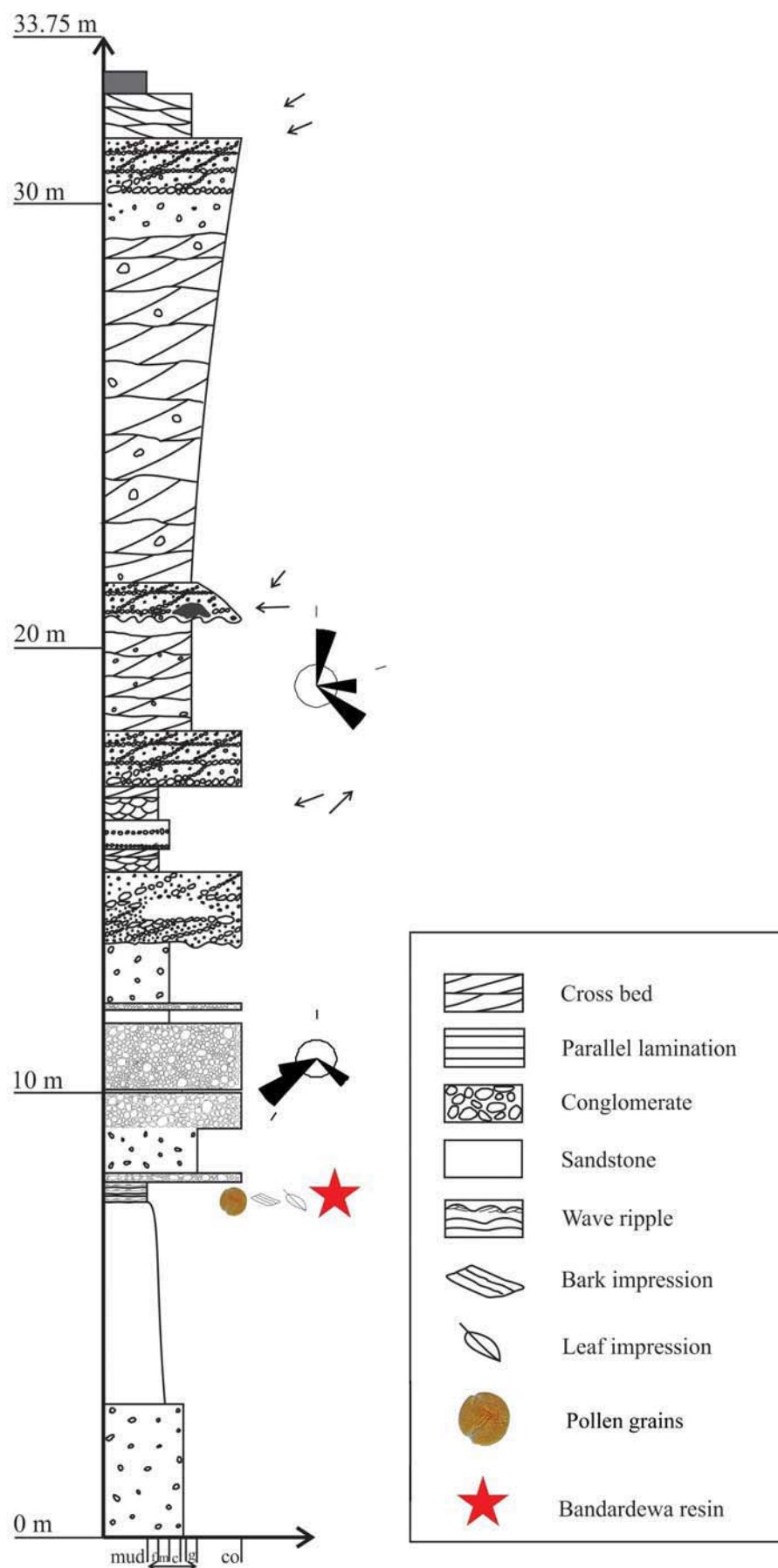


Figure S2

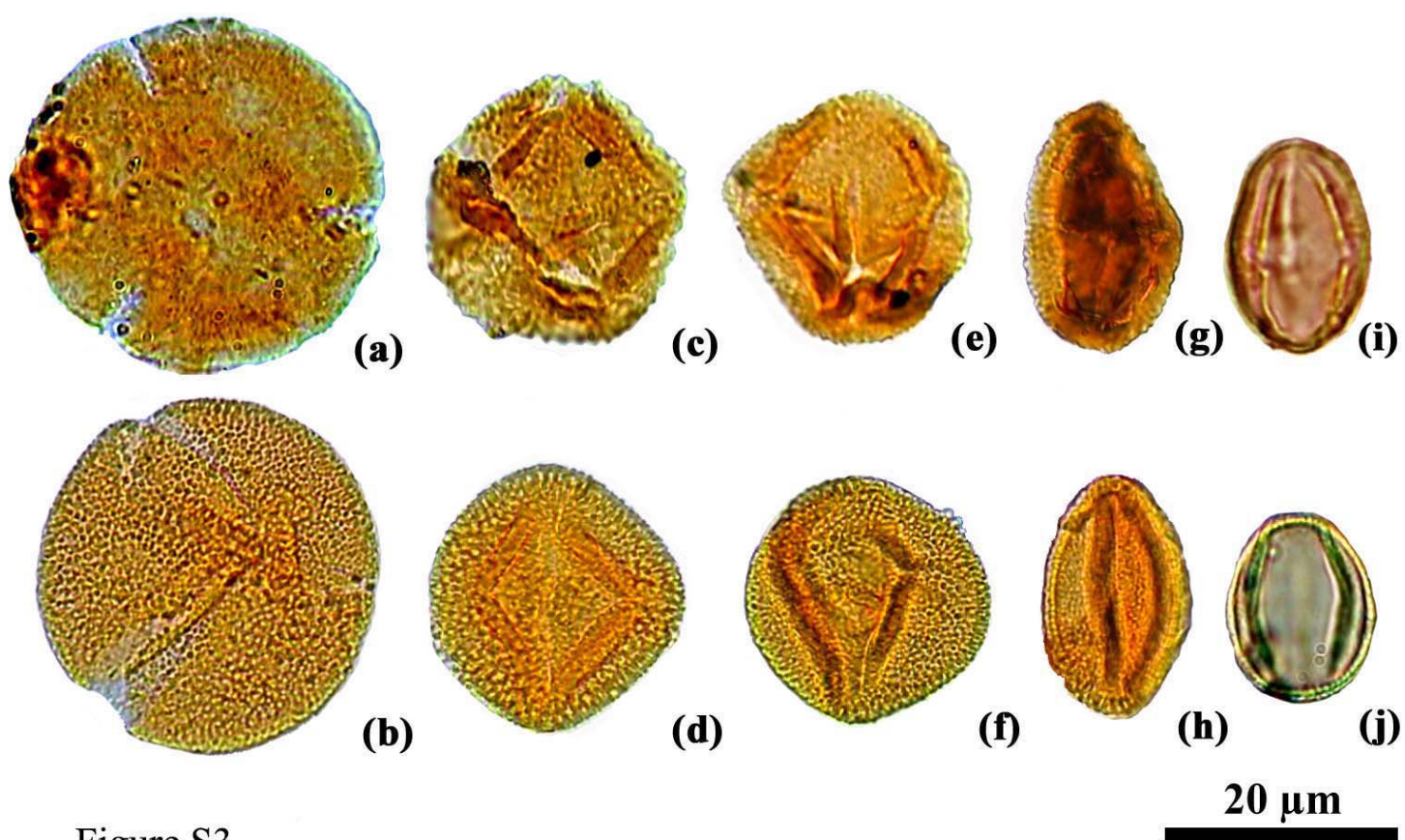


Figure S3

Supporting information

Figure S1 Location of sampling of the fossil resins (marked by green and red stars) and geological map of the studied area. The fossil resin samples were collected from upper Pliocene-lower Pleistocene Kimin Formation, Siwalik succession, eastern Himalaya (India) at two different localities.

Figure S2 The detailed sedimentological log of the Siwalik rocks exposed in the frontal part of Itanagar-Bandardewa road in Papumpare district, Arunachal Pradesh. The fossil resin bearing sample number CUH/PPL/IB7/79 was collected from this lithounit (indicated with red star in Fig. S1).

Figure S3 (a), (c), (e), (g) – Fossil pollen grains comparable to modern *Dipterocarpus* spp.; (i) – Fossil pollen grain comparable to modern *Shorea* spp.; (b), (d), (f), (h) – Modern pollen grains of *Dipterocarpus indicus*; (j) – Modern pollen grain of *Shorea robusta*.