

PRESIDENT'S LETTER

As the new NAMS President, I'd like to take this opportunity to thank Tom Dignes for his service as President during the last year. Tom will be continuing as President-Elect on the executive committee, along with Tony d'Agostino (Secretary) and Ben Sloan (Newsletter Editor). These returning officers provide not only their hard work and effort, but a great deal of continuity to our executive committee. We welcome new officers Peter Thompson (President-Elect) and Martin Farley (Treasurer) to the committee. And we give Mark Leckie a firm salute as he finishes a three-year commitment to NAMS ending with his service last year as Past-President. Thank you all!

With so many folks continuing their service, we need only have one election this year and that is for President-Elect. Two candidates have graciously accepted the nomination: Garry Jones of Spirit Energy and David McNeil of the Geological Survey of Canada. Please exercise your right as a NAMS member and vote on the enclosed ballot!

As most of you are aware, NAMS operates as a formal section of SEPM, The Society for Sedimentary Geology. However, you may not be aware of some of the ties we have with our "mother organization."

Current NAMS links with SEPM:

- NAMS is an active section of SEPM with over 300 members. We hold our business meeting at the Annual AAPG/SEPM meeting, and we publish two newsletters for our members each year.

- NAMS sponsors the Marine Micropaleontology Research Group (MMRG) of SEPM. At each SEPM annual meeting NAMS organizes the MMRG meeting, inviting speakers of interest and promoting discussion of topics pertinent to the micropaleontological community.

- SEPM graciously contributes to NAMS \$2 for each NAMS member who is a member of National SEPM.

- NAMS organizes technical sessions and field trips at the AAPG/SEPM national meetings.

The executive committee of NAMS has been working during the last year to strengthen our existing ties with SEPM. We are continuing to work on some of these initiatives.

New and Proposed Links with SEPM:

- Recently, NAMS established a process for dues remittance via SEPM members' dues state-



1999 GCAGS- GCSSEPM Meeting Biostratigrapher's Cocktail Party Garry Jones and wife Mary hosted about 35 biostratigraphers at their home in Lafayette, Louisiana during the GCAGS meeting held in September. See report and more photos, page 6. Pictured: John Walker, Mitch Covington, Garry Jones, Ashley Walker, Barbara Alexander, and Rhonda Roederer.

PRESIDENT'S LETTER, cont'd

ments. Now, SEPM members may pay their NAMS dues in conjunction with their SEPM dues. This promotes conveniences such as the ability for our members to pay using credit cards, completion of one dues statement rather than two, etc. A separate line on the SEPM dues invoice will read NAMS dues \$10. This method is not mandatory and all NAMS members may continue to pay through their NAMS dues statement included in this newsletter. Basically, it doesn't matter how you pay, it's that you pay that matters! Please pay your dues and support NAMS!

The executive committee of NAMS has been discussing for some time the establishment of an Endowed Fund. Quoting Past-President Mark Leckie: "Applied micropaleontology has been rapidly shrinking in the U.S. oil industry, yet biotic proxies of environmental change, coupled with the utility of microfossils in biostratigraphy and correlation, are powerful tools in geological analysis. John Armentrout's commentary in the February 1999 issue of *Geotimes* illustrates the two-prong challenge facing industrial biostratigraphy in the 21st century, namely, the 75% attrition since 1985 of industry biostratigraphers and the shrinking number of students in micropaleontology." NAMS believes we should take an active role in increasing the number of students trained in micropaleontology by establishing an endowed fund focused on micropaleontological education and research. Accordingly, NAMS has proposed to the SEPM Foundation the establishment of an endowed fund under the umbrella of the SEPM Foundation. The fund would be titled the "NAMS Micropaleontology Endowed Fund." Members contributing to the NAMS fund as part of the SEPM Foundation would be able to take advantage of tax-deductible options and matching company funds that are unavailable through NAMS directly because the section does not have the proper legal/tax status. We have proposed that NAMS would retain rights over the endowed fund; namely, the section would be able to allocate funds derived from the NAMS fund as the executive council deemed appropriate. Members will be able to fulfill pledges to the SEPM Foundation through the NAMS Micropaleontology Endowed Fund. Contributions will be sent to NAMS (treasurer) or SEPM Foundation (with copy sent to NAMS). Checks will be made out to the SEPM Foundation with a memo noting "NAMS Micropaleontology Endowed Fund." Check the NAMS website (<http://www.ig.utexas.edu/nams/nams.html>) for updates on progress with this proposal. It has received a positive initial review, so we anticipate the establishment of the endowed fund in the near future.

NAMS organized a technical session (poster and oral) at the 1999 San Antonio AAPG/SEPM Annual Convention on "Paleobiological, geochemical and other proxies of sea-level change." Currently, NAMS representatives (H.C. Olson and M. Leckie) have proposed a SEPM Special Publication based on papers presented at the meeting. We have potentially 14 papers on a wide range of topics concerning sea-level change. If the proposal is approved, we hope to

inquire about profit-sharing with SEPM on the volume to help boost our NAMS Micropaleontology Endowed Fund. Again, check the NAMS website (<http://www.ig.utexas.edu/nams/nams.html>) for updates on progress with this proposal.

Do you have suggestions for future NAMS activities or associations with other societies? Please feel free to contact me or any of the other members of the executive council with your ideas.

Sincerely,

Hilary Clement Olson
NAMS President
(olson@utig.ig.utexas.edu)

THE GOOD LIFE

Mister Gish you are a dish,
Our souls they are most grateful.
The antichrists within the schools,
Will soon be more respectful.

Those hammers that old Ruskin felt
Will soon be building churches.
And children will be free again,
From godless science clutches.

Lights are shining once again,
Charged from a font in Kansas.
And Darwin's fans have had their day,
Just listen to Gabriel's chorus.

But Mr Gish can it be true,
Truth lies with higher power?
And one book tells me all I need
From first to final hour?

For if it's so and machines are wrong
And floods set clocks a'ticking.
I have the urge to question still,
What is the point I'm missing?

Oh Mister Gish your writings dense,
So terribly hard to master.
And though I feel I've lost my strength,
Could blind-faith serve me better?

But nature too is hard to read,
And not needed up on Wall Street
Much better if all pre-ordained,
Confusion leaves me no sleep.

Let evolutionists go to hell,
Their faithless dogma sown.
Jesus loves you this I know,
Just look your bible tells you so.

Graham Moss (University of Texas Institute for Geophysics) became embroiled in the recent Kansas creationism scuffle and vented via this bit of verse.

Table of Contents

President's Letter	1
Evolutionary Poetry	2
Treasurer's Report	3
Member News	4
Bug Bytes	5
Meeting Reports	6
Meeting Calendar	7
1999 GSA Meeting	9
Ocean Drilling Program Calendar	9
Publications	10
Olsson Honorary Membership	11

TREASURER'S REPORT

As of 1 October 1999, the NAMS treasury contains about \$8355. From 15 April to 1 October, NAMS received \$1190 from member dues, newsletter ads, and donations. Expenditures totaled \$662 for the newsletter expenses, NAMS student book award and filing fees.

--Martin Farley, NAMS Treasurer



NAMS/SEPM OFFICERS

President
Hilary Clement Olson
University of Texas at Austin
Institute for Geophysics
4412 Spicewood Springs, Bldg. 600, Austin, Texas 78759
Tel. 512-471-0455 olson@utig.ig.utexas.edu

President-Elect
Peter Thompson
Computational Biochronology
PO Box 1039, Plano, TX 75026
Tel. 972-867-5744 prthomps@flash.net



Secretary
Tony D'Agostino
PGS Reservoirs
10550 Richmond Ave, Suite 250, Houston, TX 77042
Tel. 713-706-0590 tonyd@hstn.res.pgs.com

Treasurer
Martin B. Farley
Exxon Exploration Company
P.O. Box 4778, Houston, TX 77210
Tel. 281-423-7513 martin.b.farley@exxon.sprint.com

Newsletter Editor
Ben Sloan
Texaco Exploration
4800 Fournace Place, Bellaire, Texas 77401
Tel. 713-432-3808 sloanbj@texaco.com



Past-President
Tom Dignes
Mobil Technology Corp
P.O. Box 650232
Dallas, TX 75265-0232
Tel. 214 951 2535 tom_w_dignes@email.com



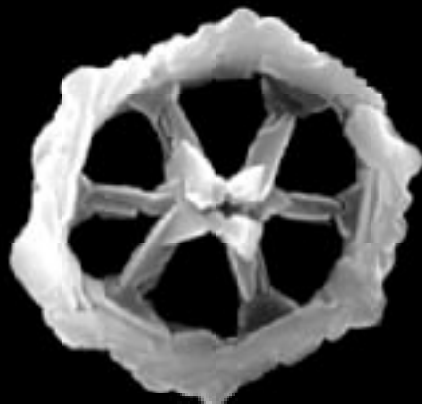
Visit NAMS online at:
<http://www.ig.utexas.edu/nams/nams.html>

NAMS NEWSLETTER ADVISORS

John Van Couvering	212-769-5657
Ken Finger	909-597-6662
Mervin Kontrovitz	318-342-1878
Annika Sanfilippo	619-534-2049
Patricia Whalen	501-253-5011
Fay Woodruff	213-831-3487

NAMS NEWS is published two times a year, just before the GSA meeting in the fall and AAPG meeting in the spring, by NAMS. Submissions are always welcome. Copyright 1999.

www.bugware.com



BugWare, Inc.

Nannofossil Biostratigraphy
Paleontological Software

Data Management's Data Conversion
Hard Copy Range Chart Input
Range Chart Generation and Plotting

(850) 668-3894
mitch@bugware.com

MEMBER NEWS

ZELLERS TOUTS TEACHING

Are you tired of the ups and downs of the industry or the difficulty finding university/college level teaching positions? Ever consider teaching in a secondary school? Well now is your chance! Our schools need good teachers and our membership is full of potential teachers. Here is an update about one of our members who has left the petroleum industry for teaching. Dr. Sally Zellers, former NAMS Treasurer, is now a struggling, yet happy eighth-grade teacher of Science at Burnet Middle School in Austin, TX. She is also sponsor of the Science club at the school.

Sally is finding teaching extremely challenging yet very rewarding. Every day she is tapping into her years of experience in the petroleum industry and in graduate school to enhance the Science program and to reach the kids at Burnet Middle School. The kids are definitely benefiting from having a teacher who worked as a scientist for several years.

Sally's message is that teaching secondary school is an excellent option for geoscientists, like her, who are or have been in career transition. At first she thought certification was an obstacle, but it was not. Sally entered the alternative program in April and started teaching in her own classroom in August. She encourages anyone who is in career transition in the geosciences to consider teaching and is willing to help anyone who is considering the field. If you are considering teaching and want to get some insight on alternative certification in Science, especially in Texas, please contact Sally at sally_zellers@hotmail.com

KRUTAK BUSILY RETIRED

Paul Krutak retired June 12, 1999 from the Chairmanship at Fort Hays State University in Hays, Kansas. His new permanent address is:

P. Krutak Geoservices International
P.O. Box 369, 2118 Main St., Rye, Colorado 81069-0369
Ph. & Fax: (719) 489-2282 E-mail rhi@fone.net

He is available for limited consulting (foraminifera, ostracoda), and also does petrographic work. Paul and one of his former M.S. students are presenting a paper at the Annual GSA Convention in Denver (Krutak, P.R. and Sablina, Yelena, 1999. Codell Sandstone (Turonian) Hydrocarbon Potential). Yelena now works for Kerr-McGee in Houston. The paper is part of Theme Session 4: Applied Integrated Stratigraphy in Exploration and Development Geology: New Techniques and Perspectives. The session is sponsored by the Cushman Foundation and the GSA Sedimentary Geology Division. Eduardo Koutsoukos is chairing the session. In addition, Paul is leading a pre-meeting Field Trip: Cretaceous Hydrocarbon Plays-Southern Colorado (Thursday-Saturday, Oct. 21-23).

MCLAUGHLIN CROSSES TO DELAWARE

Pete McLaughlin has recently moved to take a position as Senior Scientist with the Delaware Geological Survey at the University of Delaware after ten years with Exxon's research and exploration divisions. This new position will allow him to spend more time on micropaleontology and research than his recent industry duties permitted. Pete's research will principally focus on the application of biostratigraphy and sequence stratigraphy to Atlantic coastal plain geology problems.

Delaware Geological Survey
University of Delaware, Newark DE 19716-7501
Phone: (302) 831-8263 E-mail: ppmclau@udel.edu
Home page: <http://www.udel.edu/dgs/dgs.html>

ISHMAN INVADES ILLINOIS

Scott Ishman just made a move from the USGS to academia and wants to inform everyone of opportunities at Southern Illinois University at Carbondale for any promising students interested in pursuing a MS in geology in micropaleontology/paleontology. A strong soft-rock geology program at SIU invites applications for research and teaching assistantship positions from prospective graduate students in paleobiology, paleontology, and paleoecology. The focus of the studies with the research funding will be Holocene Paleoclimate and Paleoceanography, and ecosystem history reconstruction. Candidates should have a background in geology, biological sciences, or a related field. For teaching assistants' positions, a B.S. in Geology is preferred and a fluency in English language is required. The program has collaboration with USGS and several major universities. For more information, contact Prof. Ishman at (618) 453-7377 or email sishman@geo.siu.edu.

HALLOCK RECEIVES MAJOR AWARD

NAMS Member Pamela Hallock is the 1999 recipient of the Outstanding Educator Award by the Association of Women Geoscientists. She is a faculty member of the Department of Marine Science, University of South Florida, St. Petersburg, where she has held the rank of Professor since 1988. In February 1998, she and five other senior faculty women won a class-action gender-discrimination lawsuit against the University of South Florida, alleging salary inequities.

GRADSTEIN JOINS ACADEMIA

Felix Gradstein reports that he has left Saga Petroleum, Norway and taken up a position at the University of Oslo, Department of Geology, P.O.Box 1047, Blindern, N-0316 Oslo, Norway. Email felix.gradstein@geologi.uio.no

BUG BYTES

EHRENBERG CD AVAILABLE

C. G. Ehrenberg was one of the most prolific early researchers in the field of micropaleontology, and is the author of many diatom, foram and radiolarian taxonomic names (both species and genera). Understanding just what his names mean has been difficult as the original materials were until recently not easy to examine. As part of the general restoration of the Ehrenberg collection, original documentation, much of it never published, is being made available to the research community in the form of scanned images on CD-ROM.

The first of these CDs on the Ehrenberg collection is now available from the Museum in Berlin. It primarily consists of the hand-written indices to the collection created by Ehrenberg's daughter Clara. The CD-ROM contains scanned images of all pages of the 3 index volumes described in Lazarus, D. B., and R. Jahn, 1998, *Using the Ehrenberg Collection: Diatom Research*, v. 13, p. 273-291: the Geographic Index, the Taxonomic index, and the C_{dry} preparations¹ Index. These files are in (ETIF¹) format and are small enough (300 dpi, 1 bit; <1 Mb) to be readable on almost any computer. The CD-ROM also holds example images of other parts of the Ehrenberg Collection, including drawings and letters. These are also TIF files, though some are large enough (full color; >10 Mb) to require a relatively recent vintage computer. Lastly, the CD-ROM contains computer-readable tab delimited text files (Macintosh high ASCII format) with preliminary data on the micas, entered into the nascent database system that is being developed for the Collection.

Cost: US\$20 or DM40, which we are asking to cover our production and distribution costs. Please contact me for payment details. - Dave Lazarus, Curator, The Ehrenberg Collection

80,000 FORAM SLIDES AVAILABLE

UCMP has available for research use a large collection of faunal slides and sample residues from oil wells and some well cores, primarily from California. A partial listing of wells, organized by state and county, is at: www.ucmp.berkeley.edu/collections/micros/countylist.html.

The largest separate collections are:

- Arco/Richfield collection: More than 20,000 mounted faunal slides of foraminifera and over 2,000,000 unpicked sample residues from over 13,000 oil wells, primarily in California.
- Texaco collection: over 60,000 mounted faunal slides of foraminifera plus vials of unpicked sample residues, primarily from California oil wells.

Data logs and computer data files are available for many of the wells. For more information contact Karen Wetmore, UC-California, Museum of Paleontology, 1101 VLSB #4780, Berkeley, CA 94720-4780, phone 510-642-0203, Email karenw@ucmp1.berkeley.edu.

TERTIARY WEB SITE

The Tertiary Research Group hosts a web site dedicated to every kind of research on the Tertiary Period. They welcome submissions from every field that ever dips a toe in Tertiary waters, including book reviews and research notes, and can offer substantially faster throughput times than the unwieldy and expensive "big-boys". In addition they have an active field meeting programme, which members and non-members alike are welcome to attend. <http://www.tertiary-research.org/>

ELLIS AND MESSINA JOINS BIM ONLINE

Micropaleontology Press will offer the complete "Ellis and Messina" Forams, Ostracoda and Diatom catalogues online as a free service to paid-up subscribers, beginning in 2000. The Catalogues will join the Bibliography and Index of Micropaleontology on the Press' website at www.micropress.org. Both the Catalogues and the BIM will be accessible without passwords, with no use restrictions, to all net compatible computers within the subscriber's local domain (as defined by IP address blocks provided by the user) during the billing year. For details contact John Van Couvering at: micro@amnh.org.

'GLUTS ONLINE

Mike Kaminski, with several colleagues, also is setting up an internet registry of new taxa in agglutinated foraminifera, and urges all micropaleontologists to use and consult this web site. His email is m.kaminski@ucmp1.berkeley.edu.

NEWSFLASH NAMS ENDOWMENT ESTABLISHED!

The NAMS Micropaleontology Endowment Fund is a restricted Endowment Fund. It is named to honor and continue the work of NAMS (North American Micropaleontology Society), a section of SEPM. The earnings of this fund can only be used for research and education in the area of Micropaleontology. The executive committee of the NAMS section of SEPM will determine the recipients of any grants from this fund.

Checks should be made out to the SEPM Foundation with a memo: NAMS Micropaleontology Endowed Fund. Checks can be mailed to the SEPM Foundation or to the NAMS Treasurer. The NAMS Micropaleontology Endowed Fund qualifies for matching corporate dollars and contributions are tax deductible.

MEETING REPORTS

GCAGS - GCSSEPM ANNUAL CONVENTION, SEPTEMBER 15-17, LAFAYETTE



Garry Jones, GCSSEPM Vice Chairman for the Annual Meeting, reports that this year's event was a huge success. Almost 2000 people registered, vendors' booths were sold out, and short courses were well attended. GCSSEPM-related highlights included:

- Several talks/posters with a strong micropaleo component:

Fillon, R.H. and Lawless, P.N. Paleocene - Lower Miocene Sequences in the Northern Gulf: Progradational Slope Salt-Basin Deposition and Diminishing Slope-Bypass Deposition in the Deep Basin.

Kopaska-Merkel, D.C. and Schmid, D.U., New (?) Bioherm-Building Tubular Organism in Jurassic Smackover Formation, Alabama.

Glawe, L. N., Young, L.M., and Roberts, H.H., Petrology, Paleontology, and Paleoenvironments of Wilds and Lower Nichols Sands: Subsurface Paleocene Wilcox Units in Louisiana.

Dunn, D. A., Pettway, W. C., and Cooley, U., Late Cenomanian Foraminifera from the Lower Tuscaloosa Formation Across Southern Mississippi.

Breard, S. Q., Callendar, A.D. and Nault, M.J., Foraminiferal Biofacies, Local Zonation and Paleobathymetry of the Hackberry Sequence (Middle Oligocene Frio) of Southwestern Louisiana.

Breard, S. Q., and Stringer, G. L., Integrated Paleoecology and Marine Vertebrate Fauna of the Stone City Formation (Middle Eocene), Brazos River Section, Texas.

- The GCSSEPM Luncheon and Awards Ceremony attracted almost 70 people, with featured speaker John Anderson of Rice University speaking on High Resolution Sequence Stratigraphic Models of Northern Gulf of Mexico Quaternary Strata Help Predict Reservoir Character and Occurrence on the Shelf and Upper Slope.

- A GCSSEPM-sponsored, half-day short course on Applied Biostratigraphy for Geologists, Geological Engineers and Geophysicists attracted 18 people and received very positive reviews. The class was co-taught by Brian O'Neill (Shell), Rome Lytton (Texaco), Bruce Robertson (Chevron), Dick Constans (Chevron), and Garry Jones (Spirit Energy 76).

- The GCSSEPM Executive Council held their annual convention meeting.

- A Biostratigraphers Cocktail Party hosted by Mary and Garry Jones at their home on Thursday evening of the convention. Some 35 active and retired oil-company and contractor biostratigraphers and their significant others attended the get together. Many toasts to "Long Live Biostratigraphy!" were heard well into the night (see photos on front cover).

BIOSTRAT COCKTAIL PHOTOS

Lafayette consultant Bill Grubb captured these exclusive pics of grinning biostratigraphers at Garry and Mary Jones' home during the Biostrat Cocktail Party.



Host Garry Jones and NAMS Past-President (1981) Ed Picou.



NAMS President-Elect Peter Thompson, Corky Johnson, and Ron Waszczak.



Bill Grubb, Rashel Rosen, and Peter Thompson.

MEETING REPORTS

AGU ADDS BIOGEO ARM

The American Geophysical Union will be incorporating a "biological" component into its structure. "Biogeochemistry, Biogeophysics, and Planetary Ecosystems" has full status acting as if it were an AGU section for the Fall AGU meeting (Dec. 13-17) in San Francisco, but is being called a "theme" for now. This meeting is typically attended by about 7,000 earth scientists. There are several "special sessions" in "B" for the meeting.

Abstracts are being solicited in all aspects of biogeosciences. A few examples are Earth system issues, terrestrial ecosystems, marine productivity, atmospheric carbon, nutrient cycles, paleo biomes, integrated observation systems, modelling, paleo trace gases, astrobiology, remote sensing of land cover, land use change, and others. If it involves any part of the biosphere and its interaction with another part of the Earth system, it is appropriate. Abstracts can be submitted to a special session, or to the "B theme" in general. They are NOT LIMITED to the list of special sessions. In fact, a measure of the success of the bioge community at AGU will be the number and quality of abstracts which are submitted to the "B" theme and not in any special session. The session descriptions below are only a few examples of what already has been planned.

Most sessions will be arranged after the abstracts are in on Sept. 9. Many details are available on the AGU meetings site-<http://earth.agu.org/meetings/meetings.html>

-Harold Lane

NAMS BUSINESS MEETING

The Annual NAMS Business meeting was held at the AAPG Convention in San Antonio in April. A strong showing of officers, current, future, and former, and members made for a lively morning. Major points of business included discussion surrounding affiliations. NAMS is working to establish a non-profit foundation through SEPM which will be used to support students (see President's article on page 1). Also, dues may be collected via credit with SEPM renewal. Presiding officer Tom Dignes also established a NAMS Committee on Industrial Biostratigraphy and appointed Ben Sloan chair. The Committee will meet periodically to share best practices in the application of biostratigraphy in the energy business. Dick Olsson was unanimously elected to honorary membership (see page 11). A splendid Tex-Mex lunch on the Riverwalk followed.

MICROPALAEONTOLOGY

1 Year MSc Programme and Short Courses

MSc & DIPLOMA PROGRAMME

AIM: To train professional micropalaeontologists for posts in oil companies, consultancies and government service

ENTRY: A degree in Geology or related sciences. We welcome enquiries from graduates with experience in oil companies who wish to obtain further qualifications.

COURSE:PART 1: six months

Lectures and practicals in Foraminifera, Ostracoda, Calcareous Nannofossils, Radiolaria, Diatoms and Palynology/Palynofacies. Short Projects. Field collecting methods and excursion.

PART II: six months

A research project and preparation of a full geological report completed to a deadline.

(Course duration 12 months, from September)

TRAINING The programme is broadly based and covers calcareous, siliceous and organic-walled microfossils. Great emphasis is placed on the biostratigraphy and spatial distribution of the organisms and their application to problems of zonation and correlation and to environmental analysis. All major post-Palaeozoic microfossil groups are covered. Individual and team project work forms an important part of the course.

SHORT COURSES

Course elements of MSc Part 1 are available as full-time short courses:

Planktonic Foraminifera - 3 weeks;

Drs Mike Kaminski & Marcelle Fadel

Benthic Foraminifera - 3 weeks;

Drs Mike Kaminski & Marcelle Fadel

Calcareous Nannofossils - 4 weeks; Dr Paul Bown

Radiolaria - 2 weeks; Dr Elspeth Urquhart

Palynology - 3 weeks; Mrs Susan Matthews, Professor Bill

Chaloner and Dr Jamie Powell

Ostracoda - 2 weeks; Prof. Alan Lord and Dr Eric Robinson

Diatoms - 1 week; Professor Rick Battarbee

FOR FURTHER INFORMATION CONTACT:

Professor A.R. Lord/Dr E. Urquhart,
Postgraduate Unit of Micropalaeontology,
Department of Geological Sciences,
University College London,
Gower Street,
LONDON, WC1E 6BT, UK.

Telephone: (44) 171-380-7822

Fax: (44) 171-388-7614

E-Mail: micropal@ucl.ac.uk

Internet: <http://www.ucl.ac.uk/geolsci/edu/pgrads/micropal/>

MEETING CALENDAR

1999

American Association of Stratigraphic Palynologists (AASP)
32nd Annual Meeting
October 26-30th, 1999
Savannah, Georgia
contact: Fredrick J. Rich
Dept. of Geology and Geography
Georgia Southern University
Statesboro, Georgia 30460-8149
opal.geology.utoronto.ca/AASP/AASPanmtg.99.html

Where Worlds Collide: Faunal and Floral Migrations and Evolution in SE Asia-Australasia
November 29 - December 1, 1999
The University of New England
Armidale, Australia
Email: robert.hall@gl.rhbc.ac.uk

Systematics Association's Young Systematists Forum
December 1, 1999
The Natural History Museum, London
Email: N.Monks@nhm.ac.uk

2000

First Symposium on European Dinosaurs
March 15-18, 2000
Dusseldorf, Germany

Email: dinosven@compuserve.com

I N Q U A Holocene Commission
March 27-31,
Seville, Spain
contact: Dr. Dominik Faust
Lehrstuhl Physische Geographie
Kath. Universität Eichstätt
D - 85071 EICHSTÄTT
E-mail: dominik.f Faust@ku-eichstaett.de
www.ku-eichstaett.de/MGF/geo/inqua1.htm/

GSA Rocky Mountain Section
April 16-18, Missoula, MT
contact: GSA Meetings Dept.
P.O. Box 9140
Boulder, CO 80301-9140
www.geosociety.org/meetings/00

10th International Palynological Congress
June 24-30, 2000
Nanjing, China
contact: Secretary of the Organizing Committee for 10th International Palynological Conference
Nanjing Institute of Geology and Palaeontology
Academis Sinica
39 East Beijing Road
Nanjing, 210008 China
Email: gwliu@jlonline.com
members.spree.com/sip/spore/index.htm

Catastrophic Events & Mass Extinctions
July 9-12, 2000
Institute of Geochemistry
University of Vienna, Austria

6th Quadrennial Conference of the International Organisation of Palaeobotany (IOPC-VI)
July 30-August 3, 2000
Qinhuangdao City, China
contact: Prof. Lujun Liu
Secretary-General of IOPC-VI
Nanjing Institute of Geology
Academia Sinica
39 East Beijing Road
Nanjing 210008 China
Tel 86-25-6637 208
Fax 86-25-3357 026
Email: paleobot@public1.ptt.js.cn
www.geocities.com/CollegePark/Gym/7213/iopcvi.htm

8th International Nannoplankton Association Conference (INA8)
September 11-15, 2000
Bremen, Germany
contact: Professor Dr. Helmut Willems
Fachbereich 5 - Geowissenschaften
Klagenfurter Straße, 28359
Bremen, Germany
Tel 49 421 2182198 Fax 49 421 2184451
Email: willems@micropal.uni-bremen.de
alf.zfn.uni-bremen.de/~micropal/ina8.html

INTERRAD 2000, the Ninth meeting of the International Association of Radiolarian Paleontologists, will be held in a retreat style setting at the Feather River Inn, Blairsden, California, approximately 70 miles northwest of Reno, Sept. 17 - Sept. 23, 2000. The theme of the meeting is applications of radiolarian paleontology. Abstracts are sought which will showcase the utility of radiolarians in geology and oceanography. Abstract forms, housing, and registration forms will be included in the next circular mid October. Abstract and registration deadline is April 1, 2000. For more information contact Paula Noble, Technical Chair. Email: noblepj@unr.edu; Telephone 775-784-6211.

The Northeastern Section of the Geological Society of America will hold its Spring 2000 meeting March 13-15 at Rutgers University in New Brunswick, New Jersey. The Paleontological Society will host the following theme session on taphonomy at the NEGSA meeting. Submissions to this broadly construed theme could focus on any aspect of taphonomy (including plants, vertebrates or invertebrates, molecules, etc...). For more information about the theme session, contact the session conveners: Cindy Fisher, cfisher@wcupa.edu or Christopher McRoberts, microberts@cortland.edu. Abstracts are due November 29, and should be submitted to:

Kenneth G. Miller, Technical Program Chairperson
Department of Geological Sciences, Wright Labs, Rutgers University
610 Taylor Road, Piscataway, NJ 08854-8066

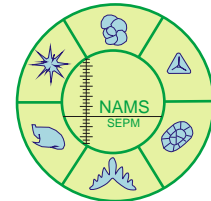
The Museum of Paleontology at the University of California, Berkeley, will host the seventh North American Paleontology Convention from June 26 to July 1, 2001 at the Clark Kerr Convention Center. The call is out for symposia, workshop, and field trip proposals. Preliminary information, including some proposed symposia, is available at: <http://www.ucmp.berkeley.edu/napc/NAPC2001.html>.

NAPC-2001 is sponsored by the Association of North American Paleontology Societies (American Association of Stratigraphic Palynologists, the Cushman Foundation, the North American Micropaleontology Section, Patrick S. Herendeen, Paleobotany Section, Botanical Society of America, Paleontological Division of the Geological Association of Canada, Paleontological Research Institution, Paleontological Society, Paleontology in the 21st Century, Pander Society, SEPM, Sociedad Paleontologia Mexicana, Society of Vertebrate Paleontology) and the Museum of Paleontology, University of California, Berkeley.

Karen Wetmore Grycewicz & Jere Lipps
Museum of Paleontology--VLSB 1101
University of California
Berkeley, California 94720 USA
email NAPC2001@ucmp1.berkeley.edu



1999 GSA Annual Meeting October 25-28, 1999 Denver, Colorado



9:45-11:45 am, Monday, October 25
Applied Integrated Stratigraphy in Exploration and Development Geology: New Techniques and Perspectives
Oral Technical Session
Cushman Foundation; GSA Sedimentary Geology Division
Eduardo A. Koutsoukos, chair



7:00-11:00 pm, Tuesday, October 26
CUSHMAN RECEPTION
NAMS and Cushman Foundation Sponsors
Fareast Room, Hyatt Hotel



8-11:30 am, Wednesday, October 27
From Greenhouse to Icehouse: The Marine Eocene-Oligocene Transition
Oral Technical Session
Donald Prothero, Linda Ivany, and Elizabeth Nesbitt, convenors

8-11:30 am, Thursday October 28
High-Resolution Stratigraphic Approaches in Paleontology
Oral Technical Session
Dana Geary and Peter Harries, chairs
sponsored by the Paleontologic Society



JOIDES Resolution Legs 187-190

<http://www-odp.tamu.edu>



Leg	Region	Co-Chiefs	Dep. Port	Date	Objectives
187	Southeast Indian	Christie/ Ridge	Fremantle Pedersen	November 11	Sample Antarctic-Australian Discordance crustal isotopic boundary to establish mantle migration.
188	Prydz Bay, Antarctica	O'Brien/Cooper	Fremantle	January 9	Establish timing of Cenozoic glaciations by drilling continental shelf, slope and rise.
189	Tasman Sea	Exon/Kennett	Hobart	March 9	Document development of cirum- Antarctic cryosphere by drilling Eocene strata in the Tasmanian Seaway.
190	Nankai Trough	TBA	Guam	May 9	Sample thick accretionary wedge in Nankai Trough.

PUBLICATIONS

GOM FORAM GUIDE

The GCSSEPM Foundation is pleased to announce the availability of the following publication: Gulf of Mexico Basin Biostratigraphic Index Microfossils, A Geoscientist's Guide, Oligocene through Pleistocene, Parts 1 & 2- Foraminifers.

This publication presents illustrations, taxonomy, stratigraphic remarks, paleobathymetry, synonyms, original reference citation, and age/zone information on stratigraphically important Oligocene through the Pleistocene marker foraminifers. Contains 215 data sheets, 3 charts, 2 tables of synonyms in a 3 ring binder. Order from Earth Enterprises, P.O. Box 672, Austin, TX 78767; telephone 512-345-3007. Price is \$60 plus postage and handling. By the end of the year, a CD ROM version should be available.

Compilation of Paleocene-Eocene foram index markers for the Gulf of Mexico area has already started. This report will also be published by the GCSSEPM Foundation.

-Rashel Rosen

PANAMA PALEO PROJECT PUBLISHED

A Paleobiotic Survey of Caribbean Faunas from the Neogene of the Isthmus of Panama, edited by Laurel Collins and Anthony Coates, will be published as Bulletin of American Paleontology no. 357 in October 1999. This volume, about 350 pages long, summarizes the Caribbean results of the Panama Paleontology Project, which is a long-term project to compare Caribbean and tropical Eastern Pacific faunas through the time of the closure of the Isthmus of Panama seaway. The volume describes the stratigraphy, depositional environments, faunal surveys of micro- and macrofaunas and floras, and what they mean with regard to tropical diversity, evolution and biogeography.

- Laurel S. Collins

NANNO HANDBOOK VOLUME 5

The fifth of the planned nine volumes of the "Handbook of Cenozoic Calcareous Nannoplankton" by Marie-Pierre Aubry has now been published. Because of the many recent changes in the profession, Micropaleontology Press invites anyone who owns, or has inherited a standing order for this work to contact micro@amnh.org to confirm your address.

-John Van Couvering

NEW BIOSTRATIGRAPHY TEXT

Biostratigraphy in Production and Development Geology has been published by the Geological Society (Special Publication 152, edited by R.W. Jones and M.D. Simmons). The book will be of interest to palaeontologists and geologists who want to know more about the application of biostratigraphy to the oil and gas industry. For more details, see the Geological Society website - <http://bookshop.geolsoc.org.uk/>

-Mike Simmons

PALEOGENE FORAM ATLAS ON CD-ROM

The Atlas of Paleocene Planktonic Foraminifera, edited by Richard K. Olsson, Christoph Hemleben, William A. Berggren, and Brian T. Huber (Smithsonian Contributions to Paleobiology No. 85), is now available in electronic format. The CD includes: over 500 black and white images, over 60 interactive species records, a comprehensive bibliography, searching, and many paleobiogeographic maps showing the distribution of species. Cost is \$50.00, including handling.

For credit card orders, send your name, shipping address, credit card name and number and expiration date to Jennifer Jett. Email jett.jennifer@nmnh.si.edu

-Brian Huber

DEEPWATER 'GLUTS IN PRINT

Mike Kaminski and Felix Gradstein report that the sequel to the Van Morkhoven et al monograph on 'Cenozoic Cosmopolitan Deep-Water Benthic Foraminifera', will soon be in press with the Gryzbowski Foundation. Over eleven years in the making the 'Atlas of Cosmopolitan Cenozoic Deep Water Agglutinated Foraminifera' covers over 135 taxa, providing details on their taxonomy, stratigraphy, paleoecology and geographic distribution. Detailed stratigraphic range charts are provided for their occurrence in several petroleum basins, and oceanic half graben. The authors and their collaborators hope that the monograph will have a stabilizing effect on the taxonomy of DWAF, greatly facilitating their use and application in a variety of fields.

NEW PLANT & PALY METHODS BOOK

Fossil Plants and Spores: modern techniques, edited by T. P. Jones (Cardiff University, UK) and N. P. Rowe (Université de Montpellier, France), provides a comprehensive collection of practical methods - balancing the techniques that have been perfected over decades of research with the latest methods and ideas.

The volume is divided into ten sections, with 60 chapters describing accounts of the methods used to obtain information from the fossil record, the problems that may be encountered and ways in which these may be overcome. The layout of the chapters follows locating, collecting, extracting, analysing and preserving plant fossils and palynomorphs. A comprehensive bibliography, glossary and list of equipment suppliers is also provided. While many of the methods in the book have been specifically designed for fossil plants, they can be adapted for other branches of palaeontology and related subjects. Published in soft cover by the Geological Society. 408 pp. \$48. See bookshop.geolsoc.org.uk

-Mike Collins, Geol. Soc. Pubs

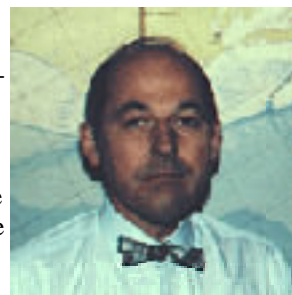
DICK OLSSON: HONORARY NAMS MEMBER

Richard K. (Dick) Olsson was elected to Honorary Membership in NAMS at the past Executive Committee meeting (San Antonio, 1999). Dick earned a Bachelors and a Masters degree at Rutgers University before moving south about 10 miles to Princeton University where he completed a second Masters degree and his doctorate. In 1960 Dick returned to Rutgers as an Assistant Professor and began a very distinguished career as a teacher and a researcher. Dick became an Associate Professor in 1963, reached the level of Professor I in 1972 and Professor II in 1989. Upon his retirement in 1996, he was honored with the title of Professor Emeritus. Dick was the Chairman of the Department of Geological Sciences and Director of its graduate program from 1977 to 1996. He advised 22 doctoral students, 15 masters students, 16 bachelor degree honor students, and served on numerous thesis committees. He is a long-standing member of NAMS and served as President from 1990-91. Dick was the President of the Petroleum Exploration Society of New York from 1979-80 and was on its Executive Committee from 1982-87. He is a fellow of the Geological Society of America.

Dick's pioneering work on the Late Cretaceous-earliest Tertiary planktonic foraminiferal biostratigraphy of the New Jersey Coastal Plain established him as an expert on this group. Subsequent work, including a stint as ship-board paleontologist for DSDP Leg 5, cemented his reputation as an outstanding micropaleontologist. Dick's keen

eye for detail and ability to recognize significant taxonomic features have enabled his work to withstand the test of time. In 1984 Dick published his paleoslope model which he and others used to calibrate the depth ranges of benthic foraminifera on passive continental margins. This led to more rigorous modeling of ancient sea level changes than had previously been attainable. In recent years Dick's interests have turned to the terminal Cretaceous event and the evolutionary radiation of planktonic foraminifera in its aftermath. Here he again applied his ability to discern critical taxonomic features to unravel the complex phylogeny of the taxa characterizing this interval. Dick was the Secretary of the Paleogene Planktonic Foraminifera Working Group from 1987-98. He is the lead editor of the "Atlas of Paleocene Planktonic Foraminifera," which promises to be a major reference work for many years to come.

Although he is officially retired, Dick still maintains an office and a lab at Rutgers and will continue to be a major force in foraminiferal micropaleontology. Congratulations to Dick on his well-deserved Honorary Membership in NAMS.



-Al Melillo

NAMS Renewal Information

Your official NAMS address label on this newsletter is the key to your dues responsibility. Please note the code and/or date after your name on the mailing label. The date tells you the year through which your dues are paid.

1999 or later - dues are paid up
 1998 - please pay \$10.00 for 1999 dues
 1997 - please pay \$10.00 for 1999 dues, \$7.00 for 1998 dues, and \$.50 late fee.
 1996 - you must pay \$27.50 this fall or you will be dropped from membership!!

**PLEASE RENEW NOW
 BEFORE YOU FORGET!**

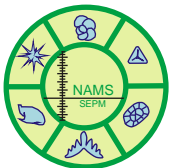
remmit to:
 NAMS, SEPM
 Martin Farley, Treasurer
 Exxon Exploration
 P.O. Box 4778
 Houston, TX 77210

If you are a Micropaleontology subscriber you are entitled to free NAMS membership. Send us a copy of your 1999 JM renewal so we can credit your account.

NAME _____	IS THIS A RENEWAL? _____	Y N
AFFILIATION _____	YEARS YOU ARE PAYING FOR _____	
ADDRESS _____	NEW APPLICATION? _____	Y N
CITY _____	MICROPALAEONTOLOGY SUBSCRIBER? _____	(enclose JM renewal) Y N
STATE _____ ZIP _____	WOULD YOU LIKE A NAMS DIRECTORY? (\$3.00)	Y N
COUNTRY _____	PLEASE INDICATE YOUR STATUS	
PHONE _____	a) student b) academic/government professional	
FAX _____	c) industry professional	
EMAIL _____	d) retired/consultant/self-employed/other	
SPECIALIZATIONS _____	ENCLOSE A CHECK PAYABLE TO NAMS,SEPM FOR	
	\$10.00 each year of membership (\$7.00 pre-1999)	
	\$0.50 each late penalty	
	\$3.00 each directory	Thanks!
	AMOUNT ENCLOSED \$ _____	

The next issue of NAMS News will be published before the 2000 AAPG Annual Meeting. Please send news to the Editor through April 1, 2000. News regarding meetings, symposia, people, books, internet information, software, new journal articles, and just about anything else regarding micropaleontology is welcome. Submit your news by email (preferred), FAX, letter, or phone to the Editor:

Benjamin Sloan
NAMS News Editor
Texaco Exploration
4800 Fournace Place
Bellaire, Texas 77401
Tel. 713.432.3808
Fax 713.432.2832
Email sloanbj@texaco.com
<http://www.ig.utexas.edu/nams/nams.html>



Benjamin J. Sloan, *NAMS News* Editor
Texaco Exploration
4800 Fournace Place
Bellaire, Texas 77401

FIRST CLASS

ADDRESS CORRECTION REQUESTED
PLEASE FORWARD